

**ULTIMA**

SURFACE REDEFINED

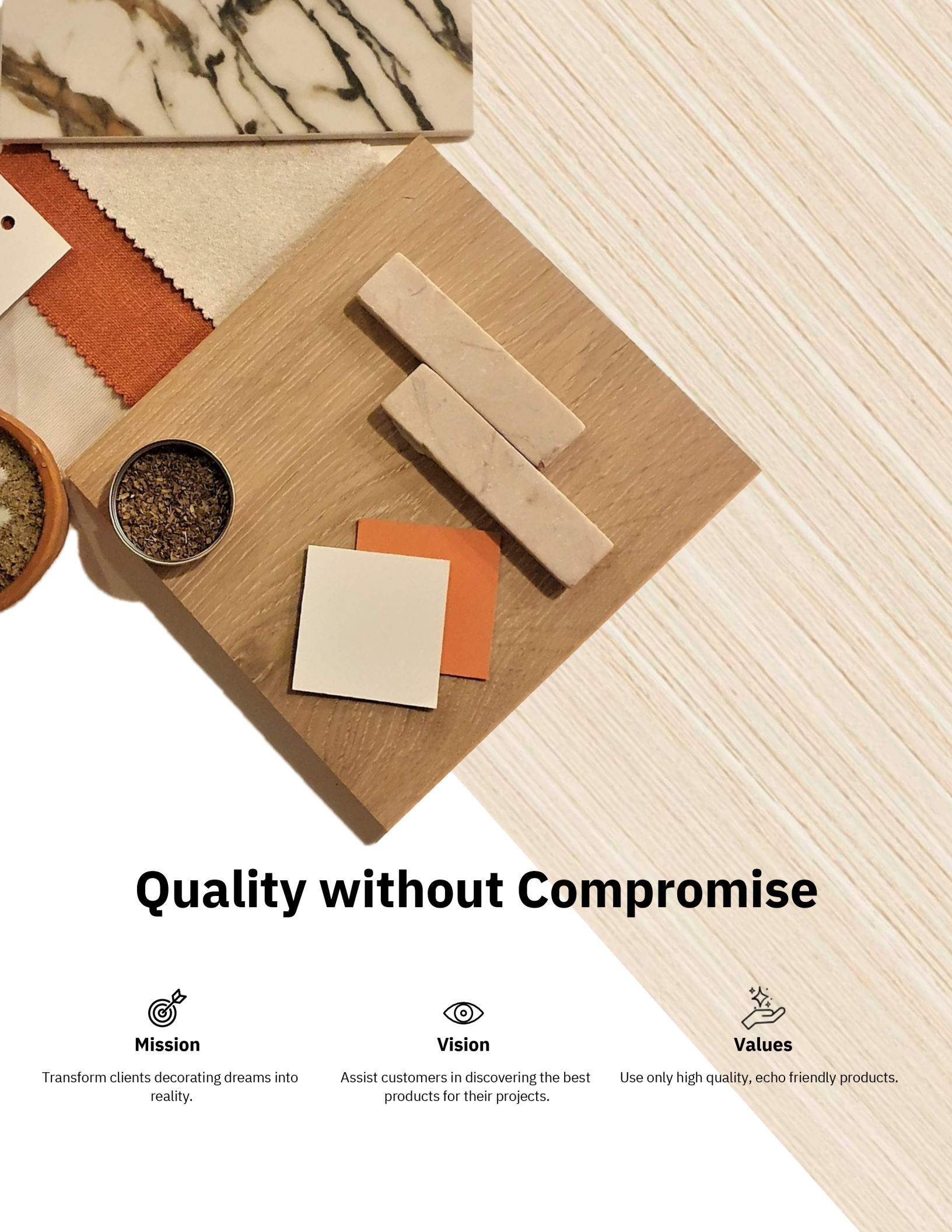
09 8374587

[info@ultima.nz](mailto:info@ultima.nz)



# ULTIMA PREMIER SERIES





# Quality without Compromise



## Mission

Transform clients decorating dreams into reality.



## Vision

Assist customers in discovering the best products for their projects.



## Values

Use only high quality, eco friendly products.



# HPL

High-pressure laminates (HPL) boast an array of exceptional qualities that render them indispensable across diverse sectors.

## -FEATURES-



Abrasion Resistant -  
Highly Durable



Anti Bacterial



Heat Resistant



Scratch Resistant



Impact Resistant



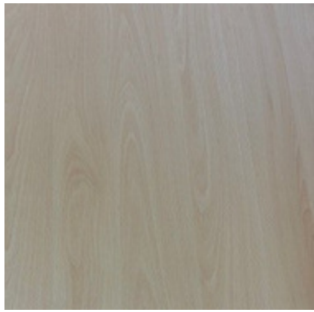


# WOOD GRAIN





631  
Knotty Cypress



0719  
Warm Maple



5027  
Ghost Ash



5053  
Driftwood



5418  
Aged Elm



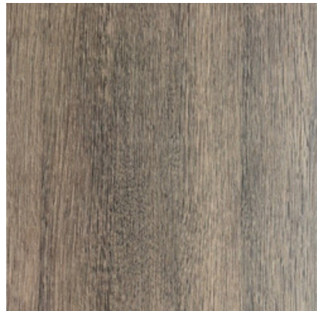
9604  
Toasted Oak



5325  
Weathered Gum



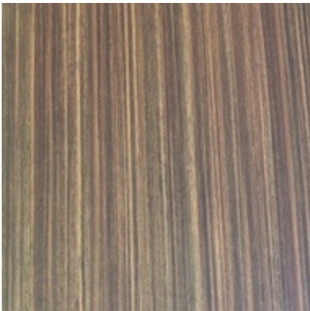
5314  
Bark



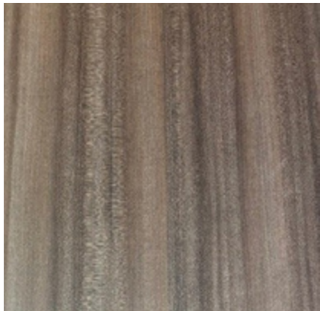
5059  
Brushed Chestnut



5516  
Veined Bark



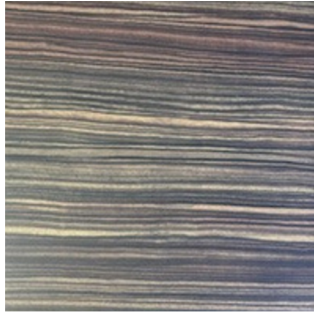
5034  
Striped Teak



5044  
Spiced Walnut



5042  
Smoked Beech



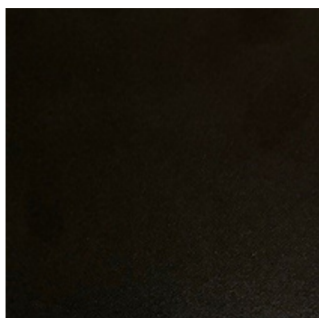
5522  
Cross Striped Teak





# RETRO FLAIR

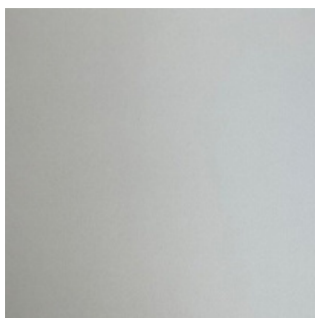




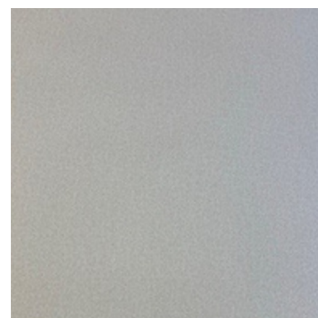
Black



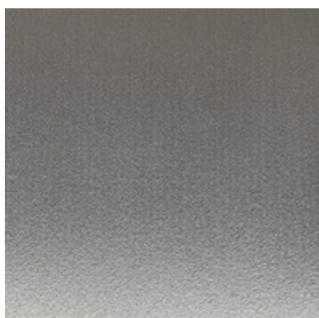
White



3823  
Eggshell



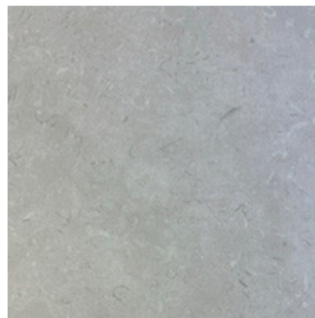
5603  
Stone Snake



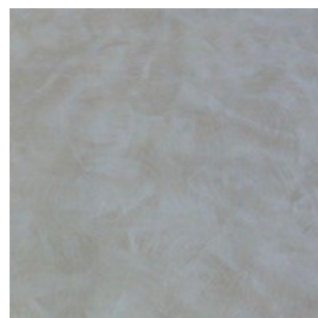
9001  
Sliver Eclipse



5878  
Woven Ash



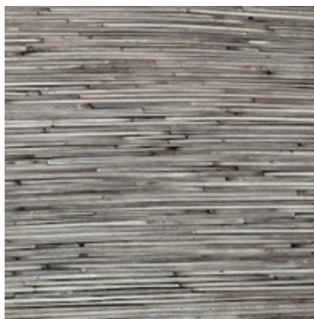
5620  
Vinyl Thunder



3751  
Sand Storm



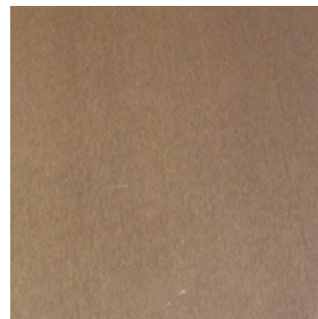
5531  
Rustic Slate



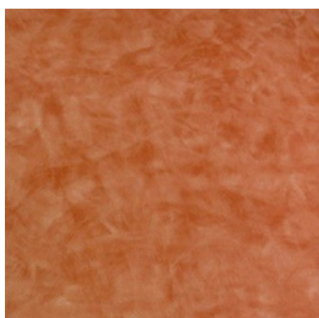
5533  
Weathered Slate



5536  
Chocolate Chaos



924  
Copper Rain



3754  
Autumn Spice



5552  
Crimson Fall

# ULTIMA

SURFACE REDEFINED

## WEBSITE

[www.ultima.nz](http://www.ultima.nz)

## CONTACT

09 837 4587

[amber@ultima.nz](mailto:amber@ultima.nz)

Amber Pribiceivich

## LOCATION

69 The Concourse,

Henderson,

Auckland, 0610

[info@ultima.nz](mailto:info@ultima.nz)

## DISCLAIMER

**Color Variation:** Colors depicted in this catalogue may vary slightly from the actual product due to differences in screen resolutions, lighting conditions, and manufacturing processes. We recommend requesting a physical sample or visiting our showroom to accurately assess the color and texture of the laminate.

**Texture and Finish:** While we strive to provide accurate descriptions and images of our laminates, variations in texture and finish may occur between batches. It is advisable to inspect the product in person or request a sample to ensure it meets your expectations.

**Installation and Maintenance:** Proper installation and maintenance are crucial for the longevity and performance of our laminates. We recommend consulting with a professional installer and following our care instructions for optimal results.

**Limited Warranty:** Our laminates are covered by a limited warranty against manufacturing defects. Please refer to the warranty terms and conditions provided with your purchase for more information.

**Price and Availability:** Prices and availability of laminates are subject to change without prior notice. Please contact our sales team for the latest pricing and stock availability.

**Returns and Exchanges:** We strive for customer satisfaction and offer a returns and exchanges policy for eligible products. Please familiarize yourself with our returns policy and contact our customer service team for assistance if needed.

By using this catalogue and making a purchase, you acknowledge and accept the terms and conditions outlined in this disclaimer. If you have any questions or concerns, please don't hesitate to contact us.